

# PRESSURE SWITCHES

11 - 5 - 08

DEAN BENNETT SUPPLY CO  
Toll Free : 800-621-4291  
PRICES ARE YOUR NET COSTS

Page 27

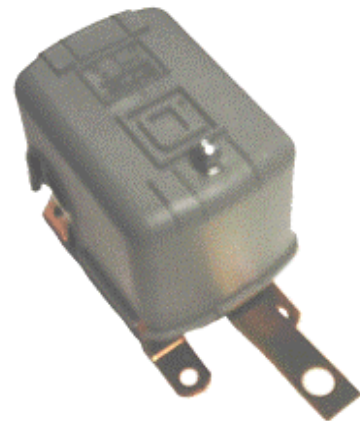


- \$ 17.75 FSG-2** The Square D Pumptrol pressure switch is the most widely sold switch on the market. Rated up to 1-1/2 hp at 115V or 2 hp at 230V. Factory preset pressure ranges of: 20 psi on / 40 psi off 30 psi on / 50 psi off and 40 psi on / 60 psi off. FSG22040 FSG23050 FSG24060
- \$ 27.25 FYG-2** Rated up to 2 hp at 115V and 3 hp at 230V. Factory preset pressure ranges of: 30 psi on / 50 psi off 40 psi on / 60 psi off 60 psi on / 80 psi off FYG23050 FYG24060 FYG26080
- \$ 72.75 GHG-2** Extra large and heavy duty pressure switch terminal block. Maximum allowable pressure setting of 300 psi. Rated up to 2 hp at 115V, 3 hp at 230V, and 5 hp at 460/575V. Factory preset pressure ranges of: 60 psi on / 80 psi off and 80 psi on / 100 psi off. GHG26080 GHG280100

## DOUBLE POLE FLOAT SWITCH

Furnas no longer makes the #69L1986 Double Pole Float Switch. We have replaced this item with the Square D Open Tank Float Switch, which performs like a mechanically activated pressure switch. However, the Square D Float Switch is not reversible like the old Furnas switch. **Order the #9036DG2R switch**, which opens the contacts on liquid rise, to control filling or pump-up of tanks (ie turning the pump off when open stock tank is full. **Order the #9036DG2 switch**, which closes the contacts on liquid rise, to control pump-down or emptying a tank (like a sump pump type operation).

- \$ 51.25 #9036DG2R SWITCH ONLY** Replaces the old Furnas 69L1986 switch. Has mounting feet for surface mounting and is rated up to 2 hp at 115V and 3 hp at 230V. 9036DG2R
- \$ 185.00 COMPLETE FLOAT SWITCH PACKAGE** Includes a 9036DG2R float switch, a 6" copper float ball, a 5" brass 1/4" rod (3 - 20" lengths that thread together) and 2 brass stop collars. #9036DG2RPKG
- |                                   |                 |                  |
|-----------------------------------|-----------------|------------------|
| 6" Copper Float Only              | <b>\$ 43.25</b> | R4406            |
| 5" Arm Assembly w/ 2 stop collars | <b>\$ 89.95</b> |                  |
| Extra stop collars (2 required)   | <b>\$ 11.95</b> | Each stop collar |



## LOW PRESSURE CUT-OFF SWITCHES

- \$ 24.75 FSG-2 FORM M-4** This is a combination pressure switch and low pressure cut-off switch. If the line pressure should drop to approximately 7 psi lower than the switch's cut-in setting, the low pressure cut-off will stop the pump. Should this happen, the lever on the switch must be manually reset before the pump will again operate. Rated up to 1-1/2 hp at 115V and 2 hp at 230V. Factory preset pressure ranges of: 20 psi on / 40 psi off and 30 psi on / 50 psi off. FSG2M42040 FSG2M43050
- \$ 48.25 GARDIT SWITCH** This Furnas low pressure cut-off switch is factory preset to disconnect power to the pump should the line pressure drop to 12 psi. Cut-off setting is adjustable from 3 psi thru 20 psi. Switch has a manual reset lever. Rated up to 1 hp at 115V and 2 hp at 230V.
- \$ 95.00 OVERHEATSWITCH** Installs on pump case to sense case temperature. The Overheatswitch turns off power at 120F and resets at 110F. Protects pumps from overheating and burning up impeller or seals. OVERHEATSWITCH



## FURNAS PRESSURE SWITCHES

- \$ 32.75 69WB** Similar to Square D's FYG-2 pressure switch. Rated up to 2 hp at 115V and 3 hp at 230V. Factory preset ranges: 30 psi on / 50 psi off. 69WB3050
- \$ 45.50 69MC** Similar to Square D's FYG-2 pressure switch. Rated up to 2 hp at 115V and 3 hp at 230V. Factory preset pressure ranges: 80 psi on / 100 psi off and 95 psi on / 125 psi off and 115 psi on / 150 psi off. 69MC80100 69MC95125 69MC115150



COMBINE PRESSURE SWITCHES WITH OTHER ITEMS IN OUR CATALOG  
TO QUALIFY FOR OUR \$ 1,000.00 FULL FREIGHT PREPAID ORDER POLICY