

WELL SEALS

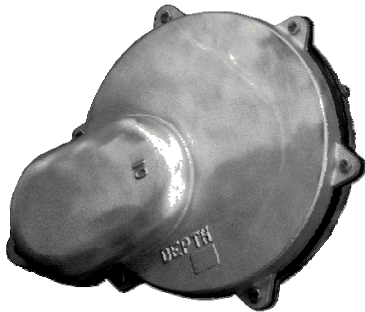
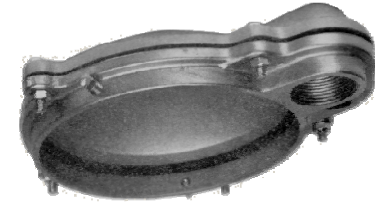
8 - 5 - 08

DEAN BENNETT SUPPLY CO
Toll Free : 800-621-4291
PRICES ARE YOUR NET COSTS

Page 28

ALUMINUM PITLESS WELL CAPS

Since pitless well caps fit over the outside of your well casing, be sure to order by the outside diameter of your well casing. These low profile aluminum pitless well caps are used on wells that have pitless adapters for underground discharge of your water delivery line. The two aluminum castings overlap each other and the well casing to provide a shingle effect to any contaminants. By removing a few bolts you will have clear access to the well while your wiring remains intact. All caps have a downward facing screen vent built into the lower aluminum casting.



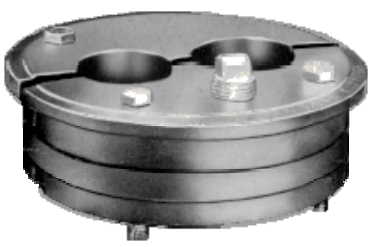
- \$ 41.95 **LX-4-1** LX41 for 4-1/2" O.D. casing w/ 1" female threaded conduit connection.
- \$ 60.50 **45WE1** 45WE1 for 5" O.D. casing watertight pitless cap w/ 1" conduit connection.
- \$ 41.00 **LX-5-1** LX51 for 5-9/16" O.D. casing w/ 1" female threaded conduit connection.
- \$ 43.75 **LX-6-1** LX61 for 6-5/8" O.D. casing w/ 1" female threaded conduit connection.
- \$ 95.00 **658LKWT** for 6-5/8" O.D. Lockable Watertight Pitless Well Cap w/ 1" connection
- \$ 50.50 **WTCC6.6** WTCC66 for 7" O.D. casing w/ 1" female threaded conduit connection
- \$ 80.75 **AWTC8** AWTC8 for 8-5/8" O.D. casing w/ 1-1/4" female threaded conduit connection.

CAST IRON STANDARD WELL SEALS

Since these well seals fit down into the inside of your well casing, be sure to order by the inside diameter of your well casing. Only the highest quality grey-iron castings are used in machining these well seals. A heavy duty thick rubber packing gland assures an absolute seal against the well casing. Long shank plated machine bolts and a long lasting laquered finish offer good corrosion resistance.

SINGLE HOLE WELL SEALS FOR SUBMERSIBLES

1" = A 1-1/4" = B 1-1/2" = C 2" = D Example: 40CIA = 4" CAST IRON with 1" HOLE



- \$ 39.00 **2" SEAL** Stocked for 1" single pipe only.
- 20CIA
- \$ 20.25 **4" SEAL** Stocked for either 1", 1-1/4" or 2" drop pipe with a 3/4" female threaded conduit opening. Use with 4" I.D. casing.
- 40CIA
- \$ 20.25 **4" ABS** ABS stocked for 1" or 1-1/4" drop pipe with a 3/4" female threaded conduit opening for use with 4" I.D. casing.
- 40ABSA 40ABSB
- \$ 20.25 **4-1/4" SEAL** Stocked for either 1" or 1-1/4" drop pipe with a 3/4" female threaded conduit opening. Use with 4-1/4" I.D. casing.
- 42CIA
- \$ 28.95 **4-1/2" SEAL** Stocked for either 1" or 1-1/4" drop pipe with a 3/4" female threaded conduit opening. Use with 4-1/2" I.D. casing.
- 45CIA
- \$ 30.50 **5" SEAL** Stocked for 1", 1-1/4", 1-1/2", or 2" drop pipe with 3/4" female threaded conduit opening. Use with 5" I.D. casing.
- 50CIA
- \$ 33.75 **5-5/8" SEAL** Stocked for either 1" or 1-1/4" drop pipe with a 3/4" female threaded conduit opening. Use with 5-5/8" I.D. casing.
- 56CIA
- \$ 33.90 **6" SEAL** Stocked for 1", 1-1/4", 1-1/2", or 2" drop pipe with a 1" female threaded conduit opening. Use with 6" I.D. casing.
- 60CIA
- \$ 33.90 **6-1/4" SEAL** Stocked for 1", 1-1/4", 1-1/2", or 2" drop pipe with a 1" female threaded conduit opening. Use with 6-1/4" I.D. casing.
- 62CIA
- \$ 74.50 **6-1/2" SEAL** Stocked for 1" drop pipe with a 3/4" female threaded conduit opening. Use with 6-1/2" I.D. casing.
- 65CIA
- \$ 101.00 **8" SEAL** Stocked for 1", 1-1/4", or 2" drop pipe with a 1" female threaded conduit opening. Use with 8" I.D. casing.
- 80CIA
- \$ 115.00 **10" SEAL** Stocked for 2" drop pipe with 1" female threaded conduit opening for use with 10" I.D. casing.
- 10CID

DOUBLE HOLE WELL SEALS FOR JET PUMPS

DOUBLE HOLE WELL SEALS 1-1/4" X 1" = A 1" X 1" = B

- \$ 19.50 **4" SEAL** Stocked for 1-1/4" x 1" or 1" x 1" pipe sizes to the ejector. 40CIDHA
- \$ 52.25 **4-1/2" SEAL** Stocked for jet pumps using 1-1/4" and 1" pipe down to ejector 45CIDHA
- \$ 30.25 **5" SEAL** Stocked for 1-1/4" x 1" or 1" x 1" pipe sizes to the ejector 50CIDHA
- \$ 31.75 **5-5/8" SEAL** Stocked for jet pumps using 1-1/4" and 1" pipe down to ejector 56CIDHA
- \$ 32.50 **6" SEAL** Stocked for 1-1/4" x 1" or 1" x 1" pipe sizes to the ejector 60CIDHA
- \$ 32.50 **6-1/4" SEAL** Stocked for jet pumps using 1-1/4" and 1" pipe down to ejector 62CIDHA