

# PITLESS ADAPTERS

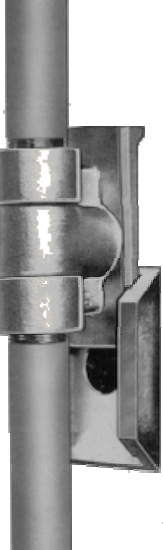
10 - 15 - 08

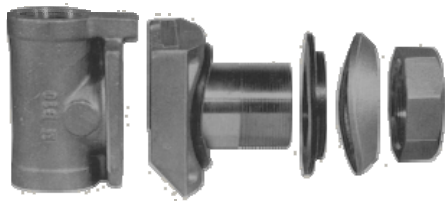
**DEAN BENNETT SUPPLY CO**  
**Toll Free : 800-621-4291**  
**PRICES ARE YOUR NET COSTS**

Page 29

## MARTINSON PITLESS ADAPTERS


Martinson pioneered the original pitless adapter over 40 years ago. Pitless adapters allow for the underground discharge of your water service line. They eliminate expensive pump houses and unsanitary well pits. The sliding tee of the pitless adapter allows for easy and efficient pump service without digging or disturbance of your water line. The B-series is a lighter weight or economy model of the original pitless adapter. The S-series is a heavy duty model for deeper pump settings. All below pitless adapters use teflon coated O-ring seals for watertight connections.

- |   |  |
|---|--|
|  | <p><b>\$ 73.75</b>    <b>B-10X</b>    This economy pitless adapter is our most popular model for use with 1" drop pipe. Manufacturer shows the B-10X will support 970' of pipe filled with water, however we recommend its use down to 500' settings only.</p> <p><b>\$ 19.80</b>    <b>T22039</b>    1-7/8" Bi-Metal Hole Saw for B10X Pitless to drill casing hole.</p> <p><b>\$ 139.50</b>    <b>S-10X</b>    This heavy duty model pitless adapter is for use with 1" drop pipe and will support 1500' of 1" pipe filled with water.</p> <p><b>\$ 18.75</b>    <b>T22038</b>    1-3/4" Bi-Metal Hole Saw for S10X Pitless to drill casing hole.</p> <p><b>\$ 108.00</b>    <b>B-20X</b>    This is the economy model for 1-1/4" drop pipe. Manufacturer shows the B-20X will support 800' of pipe filled with water, however we recommend its use down to 400' settings only.</p> <p><b>\$ 22.65</b>    <b>T22042</b>    2-1/4" Bi-Metal Hole Saw for B20X &amp; S20X Pitless Adapters.</p> <p><b>\$ 170.75</b>    <b>S-20X</b>    This heavy duty model pitless adapter is for use with 1-1/4" drop pipe and will support 1000' of 1-1/4" pipe filled with water.</p> <p><b>\$ 248.00</b>    <b>S-70X</b>    This heavy duty model pitless adapter is for use with 2" drop pipe and will support 700' of 2" pipe filled with water.</p> <p><b>\$ 32.00</b>    <b>T22139</b>    3-1/8" Bi-Metal Hold Saw for S70X Pitless to drill casing hole.</p> <p><b>\$ 35.90</b>    <b>T22050</b>    Mandrel w/Pilot Drill Bit for Hole Saw w/ 3/8" Hex.</p> <p><b>\$ 188.75</b>    <b>JB-55X</b>    This 2-pipe pitless adapter is for deep well jet pumps that use 1" and 1-1/4" pipe down to the ejector package.</p> |
|---|--|



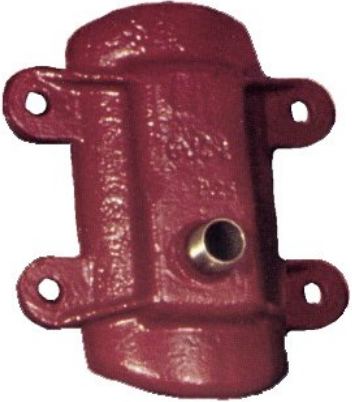
## DICKEN'S CLEARWAY WRAP-AROUNDS

This brass clamp-on pitless adapter is designed for use with plastic well casing. Dicken's wrap-around clamp design leaves the interior of the plastic casing completely open and obstruction free, allowing for its use on small diameter casing ( such as 4", 4-1/2", and 5" plastic casing ).

- |  |   |
|--|---|
|  | <p><b>\$ 120.00</b>    <b>CW-4-10-WA</b>    Designed for use with 4" inside diameter plastic well casing and 1" pump drop pipe. Manufacturer shows this unit will support approximately 2000 pounds as a working load limit ( approximately 900' of pipe filled with water ).</p> <p><b>\$ 133.00</b>    <b>CW-4.5-10-WA</b>    Designed for use with special 4-1/2" inside diameter plastic well casing and 1" pump drop pipe.</p> <p><b>\$ 138.00</b>    <b>CW-5-10-WA</b>    Designed for use with 5" inside diameter plastic well casing and 1" pump drop pipe.</p> |
|--|---|

## MAASS CLAMP-ON PITLESS ADAPTERS

The durable cast steel pitless adapter housing is clamped on the outside of the steel or PVC surface casing itself. The water contacts only stainless steel and brass, which eliminates corrosion. When the brass tee insert is pulled, there is no obstruction left in the well and the inside diameter of the casing is completely open. This allows for use with steel and PVC casing as small as 4" in size.

- |  |   |
|--|---|
|  | <p><b>\$ 150.75</b>    <b>4JC114</b>    1-1/4" Clamp On pitless adapter for 4-1/2" O.D. steel or PVC casing.</p> <p><b>\$ 156.25</b>    <b>5ODJC114</b>    1-1/4" Clamp On pitless adapter for 5" O.D. steel or PVC casing.</p> <p><b>\$ 156.25</b>    <b>5JC114</b>    1-1/4" Clamp On pitless adapter for 5-9/16" O.D. steel or PVC casing.</p> |
|--|---|

We also stock J-1 and J-1-1/4 weld on pitless adapters here in our Denver stock.

- |   |
|---|
| <p><b>\$ 82.00</b>    <b>J 1</b>    Designed for use with 4" thru 8" steel casing and 1" pump drop pipe.</p> <p><b>\$ 118.50</b>    <b>J 1-1/4</b>    Designed for use with 4" thru 8" steel casing and 1-1/4" drop pipe.</p> |
|---|

**COMBINE PITLESS ADAPTERS WITH OTHER ITEMS IN OUR CATALOG TO QUALIFY FOR OUR \$ 1,000.00 FULL FREIGHT PREPAID ORDER POLICY**