

P.V.C. PIPE FITTINGS

DEAN BENNETT SUPPLY CO
1770 E. 69th AVE. DENVER, CO 80229
PH 303-286-1500 FAX 303-286-0001
TOLL FREE 800-621-4291

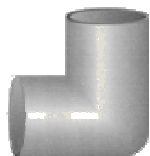
Page 40

4 - 15 - 00 NET PRICES



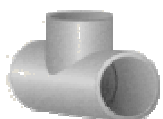
COUPLINGS - - - Slip (on to pipe) x Slip (on to pipe)

3/4"	7PCOUP	\$.28	1-1/2"	15PCOUP	\$.70	4"	40PCOUP	\$ 5.35
1"	10PCOUP	\$.47	2"	20PCOUP	\$ 1.08			
1-1/4"	12PCOUP	\$.65	3"	30PCOUP	\$ 3.71			



90 Degree ELBOWS - - - Slip (on to pipe) x Slip (on to pipe)

3/4"	7PL	\$.34	1-1/2"	15PL	\$ 1.14	4"	40PL	\$ 11.67
1"	10PL	\$.61	2"	20PL	\$ 1.79			
1-1/4"	12PL	\$ 1.07	3"	30PL	\$ 6.52			



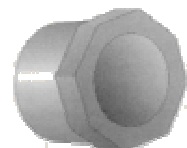
TEES - - - Slip (on to pipe) x Slip (on to pipe) x Slip (on to pipe)

3/4"	7PT	\$.42	1-1/2"	15PT	\$ 1.52	4"	40PT	\$ 17.31
1"	10PT	\$.80	2"	20PT	\$ 2.21			
1-1/4"	12PT	\$ 1.26	3"	30PT	\$ 9.57			



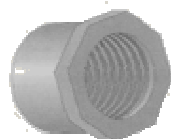
45 Degree ELBOWS - - - Slip (on to pipe) x Slip (on to pipe)

3/4"	7P45L	\$.76	1-1/2"	15P45L	\$ 1.61	4"	40P45L	\$ 15.20
1"	10P45L	\$.91	2"	20P45L	\$ 2.10			
1-1/4"	12P45L	\$ 1.28	3"	30P45L	\$ 8.47			



#437 BUSHINGS - - - Spigot (into fitting) x Slip (on to pipe)

3/4" x 1/2"	7P4375	\$.31	1-1/2" x 1"	15P43710	\$.81	2" x 1-1/2"	20P43715	\$ 1.33
1" x 3/4"	10P4377	\$.57	1-1/2" x 1-1/4"	15P43712	\$.81	3" x 2"	30P43720	\$ 3.16
1-1/4" x 3/4"	12P4377	\$.76	2" x 3/4"	20P4377	\$ 1.33	4" x 2"	40P43720	\$ 7.08
1-1/4" x 1"	12P43710	\$.76	2" x 1"	20P43710	\$ 1.33	4" x 3"	40P43730	\$ 7.08
1-1/2" x 3/4"	15P4377	\$.81	2" x 1-1/4"	20P43712	\$ 1.33			



#438 BUSHINGS - - - Spigot (into fitting) x Female Pipe Thread

3/4" x 1/2"	7P4385	\$.65	1-1/2" x 3/4"	15P4387	\$ 1.42	2" x 1"	20P43810	\$ 1.90
1" x 3/4"	10P4387	\$.80	1-1/2" x 1"	15P43810	\$ 1.42	2" x 1-1/4"	20P43812	\$ 1.90
1-1/4" x 3/4"	12P4387	\$ 1.23	1-1/2" x 1-1/4"	15P43812	\$ 1.42	2" x 1-1/2"	20P43815	\$ 1.90
1-1/4" x 1"	12P43810	\$ 1.23	2" x 3/4"	20P4387	\$ 1.90	3" x 2"	30P43820	\$ 3.16
						4" x 2"	40P43820	\$ 7.06



#439 BUSHINGS - - - Male Pipe Thread x Female Pipe Thread

3/4" x 1/2"	7P4395	\$.88	1-1/4" x 3/4"	12P4397	\$ 1.83	1-1/2" x 1-1/4"	15P43912	\$ 2.21
1" x 3/4"	10P4397	\$ 1.23	1-1/4" x 1"	12P43910	\$ 1.83	2" x 1-1/2"	20P43915	\$ 2.37
						3" x 2"	30P43920	\$ 9.77



THREADED PLUGS - - - Male Pipe Thread

3/4"	7PTP	\$.87	1-1/2"	15PTP	\$ 1.60	4"	40PTP	\$ 4.25
1"	10PTP	\$ 1.42	2"	20PTP	\$ 2.06	6"	60PTP	\$ 17.55
1-1/4"	12PTP	\$ 1.49	3"	30PTP	\$ 4.34			



THREADED SCHEDULE 80 NIPPLES - - - Male Pipe Thread x Male Pipe Thread

3/4" x 3"	34X3PNIP	\$.36	1-1/4" x 3"	114X3PNIP	\$.68	2" x CI	2XCLPNIP	\$.86
1" x 3"	1X3PNIP	\$.51	1-1/2" x 3"	112X3PNIP	\$.83	2" x 3"	2X3PNIP	\$ 1.05